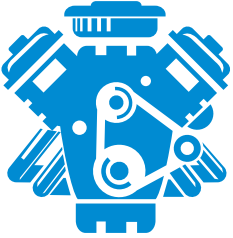
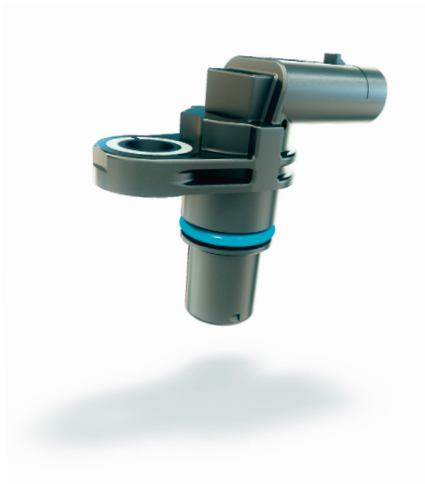


TPO CAME SENSOR



ENGINE EFFICIENCY

Improve engine performance



TECHNOLOGY

HALL MAGNETORESISTANCE

Application description

This sensor is used for engine synchronization. It participates in important functions such as:

- VVT (variable valve timing) closed-loop control, allowing the engine management system to reduce emissions.
- Back up for crank sensors.
- Optimization of engine performance. It is placed on the engine cam cover, reading the cam trigger wheel located on the camshaft.

Technical characteristics

- Hall effect sensor
- Twisted independent mounting
- Rare-earth-free device
- Open collector output
- Highly customizable standard design (highly flexible end-of-line TPO programming for maximum transparency)
- Outer diameter: 12mm
- Total length: 42mm
- True zero speed detection